

### FUNCTIONS

The SR1118 transcoder allows transcoding IRIGB analog time code toward RS232/RS422 time frame as well as 1 PPS signal.

The signal on the input must be compliant with the IRIG STANDARD 200-98 i.e. a 1 KHz carrier and an amplitude modulation of 1/1 : 1/3. The unit accept all IRIG B12x codes (x = 0, 1, 2, 3). The signal level must be in the range 0.6 to 6.0 V peak-peak.

The unit appears as a standard 19 inch wide case of 1 U height and a depth of 240 mm.

The equipment provides 10 RS232/RS422 outputs and 5 x1 PPS outputs on the rear face.

IRIGB mode may be chosen between : standard (200-98) AFNOR and IEEE-1344 witch contain the "year" information

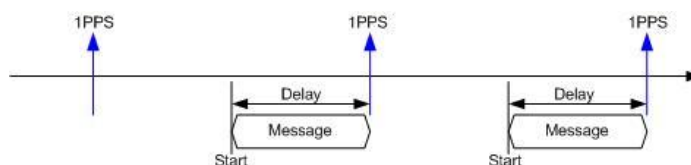
The unit is remotely monitored and commanded through an Ethernet 10/100 Mbit/s connection using standard HTTP protocol. To access the network configuration, the equipment must be connected to a LAN and a standard Internet browser must be executed on a computer

The message format is configurable using a standard browser. The message format is set by mean of a configuration string witch describes the sequence of the output information's.



### SPECIFICATIONS

<b>Divers</b>	The rear face of the unit holds all input output connectors. The power supply input uses standard CEE 230 VAC outlet with fuse, filter and On/Off switch.
<b>Signals</b>	Analog time code input: insulated female BNC with transformer, 600Ω, 1 KHz modulated sine signal 1/3 1/1. Level 0,6 Vcc to 6 Vcc. Outputs RS232/RS422: SubD 9 pins Female. 1 PPS outputs: Level: 5V TTL, insulated BNC. Loaded by 50 Ω. Positive pulse of 500μs width.
<b>IRIGB Mode</b>	Standard, AFNOR, IEEE-1344
<b>Output delay</b>	The output delay parameter defines the start of the message sending before the next 1 PPS. It allows to synchronize the message and the 1PPS or to set the end of the message before the next 1 PPS. The delay must be at least 50 μs. For a given delay, the jitter on the last bit of the message is <math>\lt; \pm 25 \mu\text{s}</math>



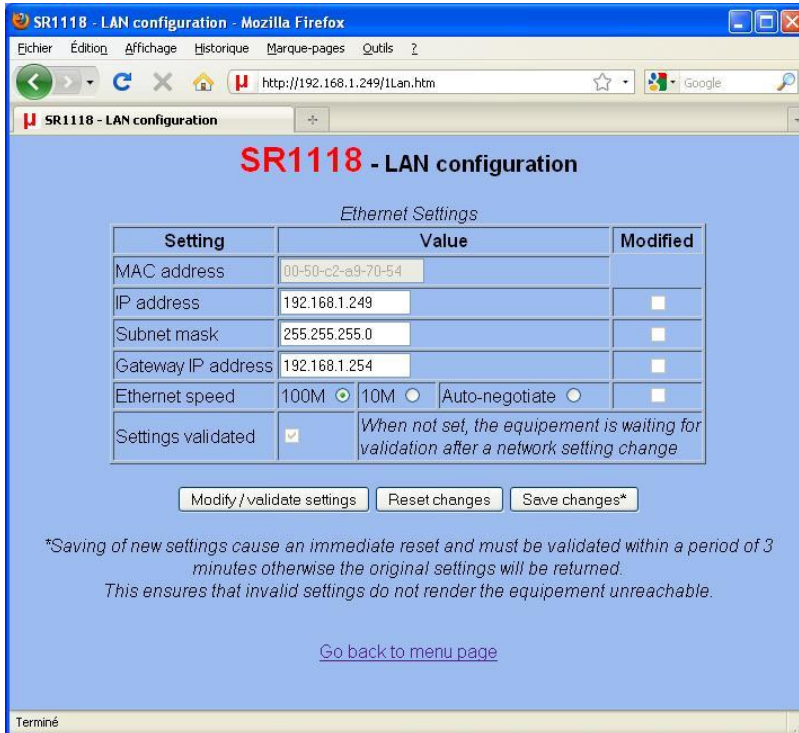
*Example: phasing the message in the one second cycle*

<b>dimensions</b>	L = 19~ (481 mm), H = 1U (44.5 mm), P= 280 mm.
<b>Weight</b>	3 Kg.
<b>Consumption</b>	115 VAC : 6W 230 VAC : 4W

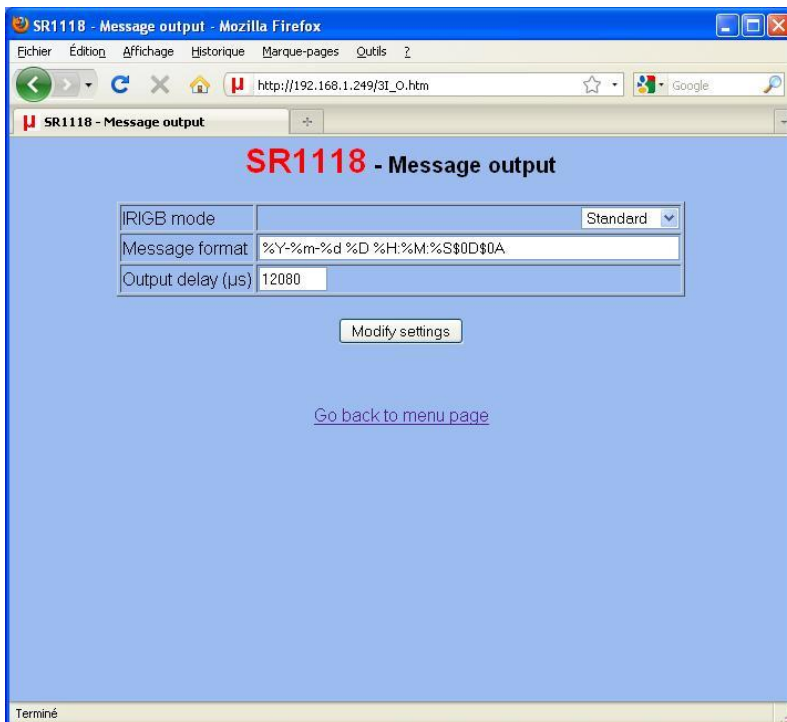
**Order code**                      **SR1118**

# SR1118

## Configurable time code transcoder IRIGB toward RS232/422



LAN interface  
configuration of the unit



Message format setting